

# Lookbook

## Fabrics 2020

*Christian Fischbacher*

ST. GALLEN – SWITZERLAND  
EST. 1819

BEYOND 200

201

— YEARS —  
OF  
TEXTILE  
EXPERTISE





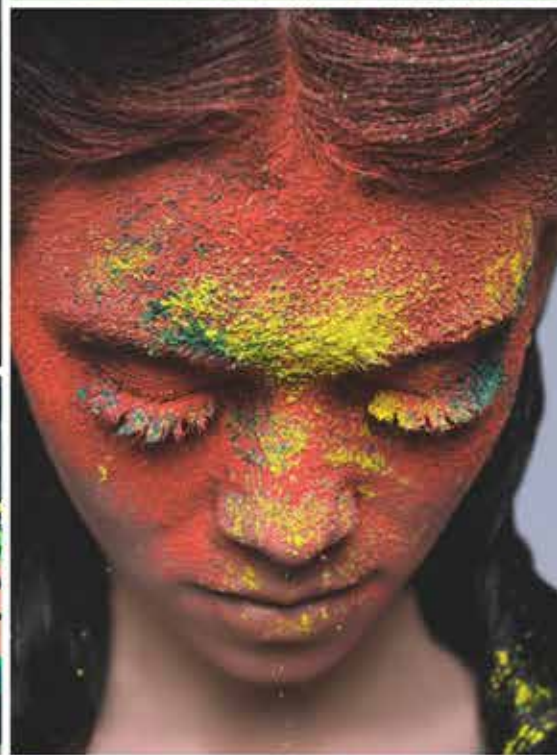
# Estival

SONORA | SINALOA | PALMERA | VENTURA | HACIENDA

[WWW.FISCHBACHER.COM](http://WWW.FISCHBACHER.COM)







*Christian Fischbacher*









ESTIVAL | SONORA | SINALOA

*Christian Fischbacher*







# Sinaloa Sonora



JAMILA | AYAKO | VENTURA | COTTON BELT II

*Christian Fischbacher*







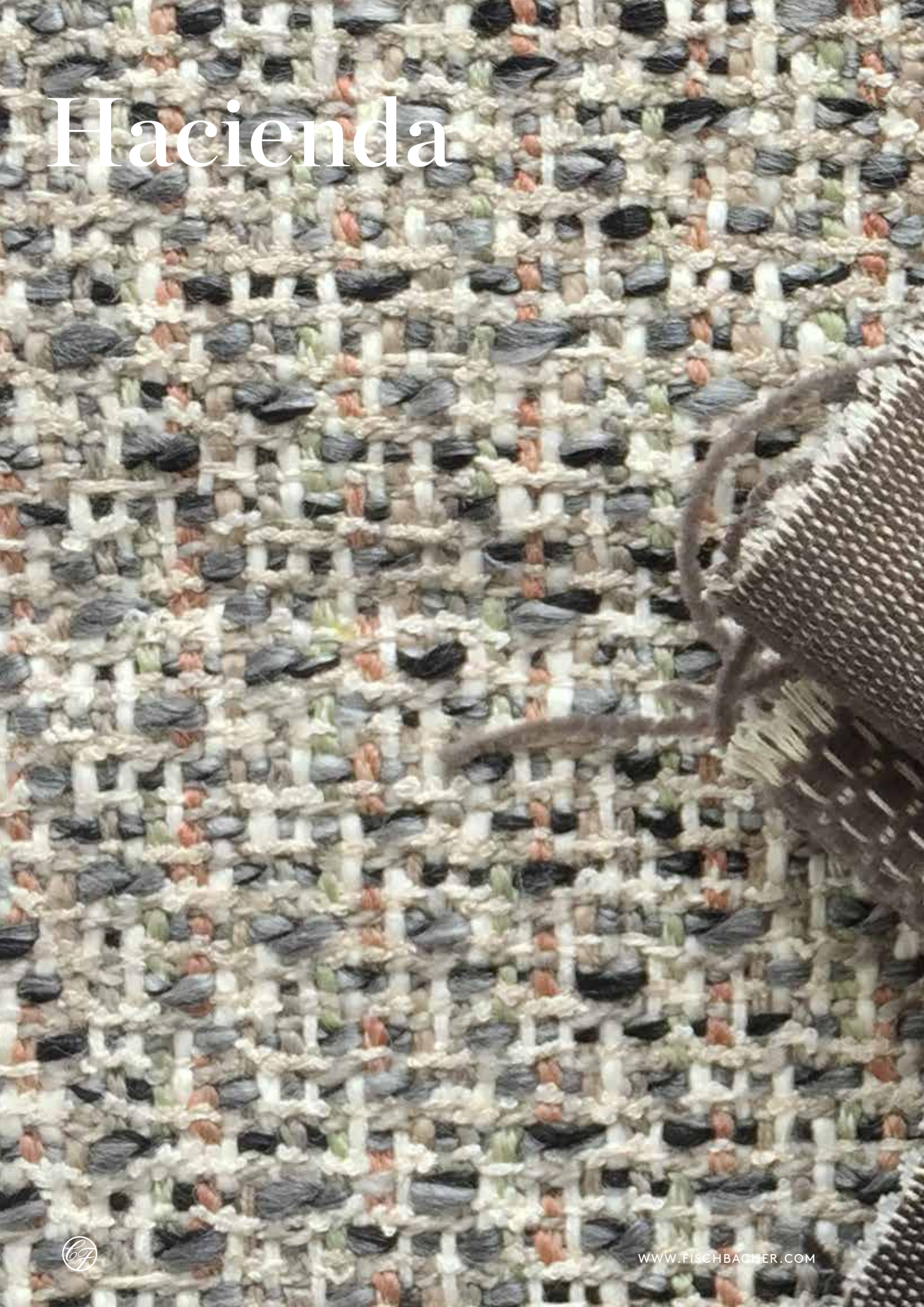
# Hacienda



APHRODITE | SONORA | AYAKO | FIESTA

*Christian Fischbacher*





# Hacienda







SONORA | SINALOA

*Christian Fischbacher*







# Palmera



SONORA

*Christian Fischbacher*



# Fino







SELVA | HACIENDA | LISBOA

*Christian Fischbacher*









*Christian Fischbacher*



# Sonora





# Estival









# Behind the Design



*Christian Fischbacher*



# Coba









# Monterrey

CENOTE | YUKATAN | TULUM | FRIDA | LISBOA | PURO



[WWW.FISCHBACHER.COM](http://WWW.FISCHBACHER.COM)









# Tulum

[WWW.FISCHBACHER.COM](http://WWW.FISCHBACHER.COM)





A photograph of a room with light-colored curtains, a large window with a grid pattern, and a tall cactus in a woven basket. The curtains are light-colored and have a subtle pattern. The window is large and has a dark frame with a grid pattern. The cactus is tall and green, with several arms, and is in a dark, woven basket with a wooden base and a tassel. The room has a warm, natural light.

# Cenote

*Christian Fischbacher*



# Cancun





# Tikal



# Amira







PURO

*Christian Fischbacher*







# Ayako



PURO

*Christian Fischbacher*



# Athens Stripe





# Athens

*Christian Fischbacher*







# Alyssa



*Christian Fischbacher*



# Anahita







*Christian Fischbacher*



# Margarita







# Templo Mayor

*Christian Fischbacher*



# Rosas







Priti

*Christian Fischbacher*



# Precious Precious Stripe

EPONA



[WWW.FISCHBACHER.COM](http://WWW.FISCHBACHER.COM)





*Christian Fischbacher*



# Epona















# Inversa Aphrodite

*Christian Fischbacher*



# Genius







*Christian Fischbacher*







# Anahi



*Christian Fischbacher*



# Leora





# Cotton Belt





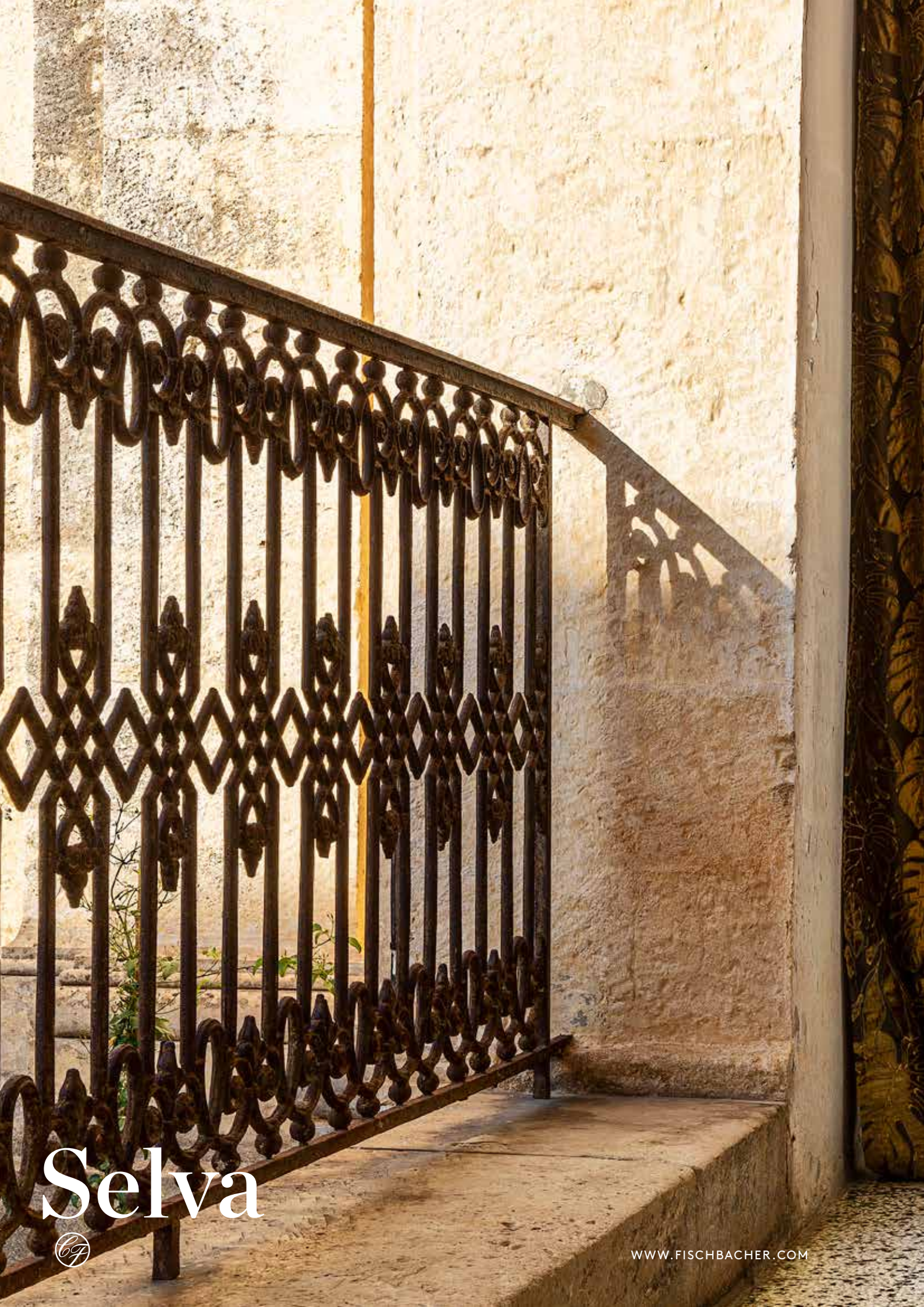
# Labyrinth











Selva







*Christian Fischbacher*



# Contour







*Christian Fischbacher*



# Paradiso







*Christian Fischbacher*



## ESTIVAL 14641 + 14642

The ESTIVAL design is a colourful, summery celebration of colours and shapes, and is inspired by Mexican culture and naive art. The hand-painted watercolours of blossoms and leaves dance joyfully over the textured ground cloth. The beautiful design is achieved through transfer printing. The base cloth is hand woven using a mixed polyester fibre yarn, parts of which does not accept the dye, this creates some deliberate blank areas, resulting in a wonderful effect that emphasises the artistic character of ESTIVAL. The number of polyester fibres was adjusted in both colourways to achieve the desired colouration. Alongside its bright and cheerful incarnation, ESTIVAL also comes in a wonderfully soft, sun bleached, neutral colourway.

## INVERSA 14624

INVERSA should be seen from both sides as there is no front or back, only a lustrous shiny side or natural matte side. This exciting effect is achieved through the use of a lustrous yarn in the warp and a matte yarn in the weft. The warp satin completely covers the matte weft on one side, while it is visible on the other side. INVERSA is not only double-sided, but can also be used in both directions, either railoraded or not.

## SINALOA 14623

SINALOA can be used as a heavy-duty upholstery fabric and as a heavy decorative material. The small graphical pattern woven on a dobby loom is a perfect match for SONORA. The same blend of polyester and linen in the warp and a polyamide chenille yarn in the weft creates a surface that is both velvety soft and durable. The interplay of the thread systems creates a different small pattern on both sides of the fabric. As linen is a natural fibre, slubs are a property of the material and can appear as fine lines on the fabric. This is the nature of the product and is not a reason for complaint. We recommend firm upholstery for SINALOA.

## SONORA 14622

The plain fabric SONORA, woven with a polyester and linen warp and a polyamide chenille yarn in the weft, creates a surface that is both velvety soft and extremely durable. Unlike velvet, the round, fluffy yarn has no direction but still has the same pleasant velvet like feel. The clearly visible warp yarns give the fabric its modern, dry character, and contemporary look. It can be used as an extremely heavy-duty upholstery fabric or as a heavy decorative material. As linen is a natural fibre, slubs are a property of the material and give the fabric its unique appearance. They can appear as fine lines on the fabric. This is the nature of the product and is not a reason for complaint. We recommend firm upholstery for SONORA.

## HACIENDA 14631

An upholstery fabric as colourful as life on a South American hacienda! The interplay of the different colours of the twisted yarns creates the lively character of the fabric. A contemporary interpretation of old-world craftsmanship. HACIENDA can be used both as heavy decoration and as an upholstery fabric.

## PALMERA 14638

Two colours in the warp and two in the weft create a lively palm design. The chenille yarn lends an especially soft feel. PALMERA is available in six contemporary colours.

## FINO 14636

FINO is made from the eco-friendly materials Lyocell and wool. The cellulose fibre Lyocell is made from the sustainable and naturally renewable raw material wood. The yarn production is resource-friendly and TENCEL™ Lyocell fibres are demonstrably compostable and biodegradable. It also has antibacterial properties, just like wool, and the combination of Lyocell and wool makes FINO especially soft-flowing. A chintz finish gives this double-width fabric its elegant sheen.





## APHRODITE 14637

Named after the goddess of love and beauty, APHRODITE falls to the floor in soft folds like a robe. A special finish lends this delicate fabric its flowing wave-like structure. This beautiful double-width fabric is suitable for both residential and contract use.

## COTTON BELT II 14640

Unser beliebter Klassiker Cotton Belt neu in 40 Farben. Der stückgefärbter Baumwoll-Satin kann sowohl als Futterstoff wie auch als Vorhang verwendet werden.

## COBA 2843

The floor-to-ceiling COBA leno weave fabric sports a natural wool look. This yarn-dyed fabric is available in various colour blends and is combined with a matching warp, depending on the colourway. Blue and anthracite are woven on a black warp, and brown, beige and the light natural shades on a white warp. COBA also comes in pure white.

## MONTERREY 10806

MONTERREY is a floor-to-ceiling decorative fabric that uses a clip cord technique with a large abstract stripe design. Inspired by intertwining ropes hanging from the ceiling. The yarns create different textures and surfaces ranging from very voluminous to fine delicate details. The colour palette consisting of natural tones, includes one with saffron orange, which emphasises the country look of this fabric.

## CENOTE 2841

The floor-to-ceiling CENOTE 'in-between' fabric is a blend composed of cotton and polyester and boasts a fascinating and sophisticated jacquard wave motif. This extra-long, soft and delicate faux-uni fabric is available in natural tones and in contemporary denim blue and warm grey.

## TULUM 2845

TULUM is made of 100% linen, This coarse textured fabric, is sure to please with its modern country look. The natural fibre is woven into a coarse plain weave that looks like rough hemp, but because of a special finishing is soft to the touch.. The colour palette is made up of the natural colour of the plant fibres, the bleached version and a piece-dyed, cement-grey version.

## YUCATAN 2850

YUCATAN is a decorative fabric with a strong personality that can be used for upholstery or as a heavy curtain. The compact weave, made of 100% linen, is reminiscent of hemp, especially in its natural colourway. Because of a special finishing to the linen, it is very soft and malleable. It is also available in white and cement grey. With a 20,000 Martindale abrasion resistance, YUCATAN is perfect for light upholstery.

## CANCUN 2840

The floor-to-ceiling CANCUN fabric boasts delicate stripes made up of a melange of different weft yarns. Shimmering yarns create points of light that contrast with the matte, wool-look yarns. The open weave gives these yarns a special dynamism. The colour palette is made up of four natural shades.

## TIKAL 14633

Named after the ancient Mayan city TIKAL is inspired by the art of the indigenous people of Central America. Simple geometric shapes are carefully cut out using the clip cord technique to produce a vibrant structure, whose fringed threads hint at plumage or perhaps precious feathers.

## AMIRA 14626

The floor-to-ceiling semi-transparent AMIRA fabric is flame-retardant and looks very natural. The partially dyed yarn creates the impression of natural fibres. The four natural colours can be used in both the residential and commercial sectors.



## AYAKO 14628

Delicate cherry blossoms captured on a sheet of paper with brush and ink – the lightweight, floor-to-ceiling jacquard AYAKO fabric lends a hint of spring. The shrink yarn enhances the blossoms and creates a dynamic surface structure. Made of 100% Trevira CS, AYAKO can be used in both residential and commercial settings.

## ATHEN STRIPE 2839

The ATHEN STRIPE is woven on a stable leno construction, with a metallic effect made from yarn-dyed Trevira CS. This floor-to-ceiling decorative fabric with generous wide stripes and a colour palette based on neutral tones is both simple and elegant.

## ALYSSA 2842

The floor-to-ceiling ALYSSA leno weave fabric is woven in 100% Trevira CS. This flame-resistant fabric with a soft drape creates a perfect wool bouclé look. The colour palette includes elegant shades such as saffron yellow, navy blue on a black warp, and soft natural tones on a white warp.

## ANAHITA 14627

ANAHITA's Trevira CS yarns are woven on an extremely fine warp to perfectly imitate natural raw silk. Delicate colour nuances, various yarn thicknesses and a jacquard weave help to complete the illusion. The four natural colours are perfect for both residential and commercial use.

## MARGARITA 10803

The floor-to-ceiling decorative MARGARITA fabric is made using a clip cord technique. The floating yarns are cut around the flowers and in order to showcase the precision of this technique, the fabric deliberately flaunts its cut yarns on the front side. The soft linen-cotton blend is available in both white-on-white and in contrasting colours. Various weaves create a bouquet of delicate daisies.

## TEMPLO MAYOR 2849

The TEMPLO MAYOR decorative fabric in a melange look with narrow stripes can be used in warp or weft direction. The irregular warp threads become visible at the transparent points of the narrow stripes. The white warp is combined with natural colours such as beige, light grey and anthracite. TEMPLO MAYOR also comes in pure white.

## ROSAS 10807

ROSAS is a new interpretation of a traditional embroidery. This leno organza has been embroidered with two-tone roses throughout its entire height. The elegant colour palette includes many sophisticated colour versions on the black or white base cloths.

## PRITI 10817

PRITI is a new generation of devoré or burnout fabric. Consisting of a cotton and polyester blend, the background is only semi-transparent and forms a beautiful matte gauze. The floral design is the result of a two-tone base melange and the non-burnout cotton. PRITI has a soft drape and is available in natural tones and the contemporary colours of denim blue and anthracite.

## PRECIOUS 2835

PRECIOUS radiates lightness and elegance whilst also being practical. The seductive beauty of the silk yarn, combined with viscose gives this transparent fabric a soft feel and sophisticated look. The main feature of PRECIOUS is that it has a high resistance to sunlight thanks to its polyester warp threads. The colour palette of the yarn-dyed curtain ranges from natural shades to contemporary colours such as denim blue and dusky rose. Another special feature of this silk mix yarn; it is also washable.





## PRECIOUS STRIPE 2836

The sophisticated and majestic PRECIOUS STRIPE is a stripe version of the plain, transparent fabric called PRECIOUS. This silk blend fabric with its delicate feel and shimmering look, is resistant to sunlight thanks to its polyester warp threads. The seductive beauty of the silk yarn combined with viscose enhances the two wide yarn-dyed stripes, available in a colour palette including contemporary denim blue and powder pink, as well as natural tones.

## EPONA 14625

Named after the Roman goddess, the inspiration for the EPONA design lies in antiquity. A regular, braided-looking structure is covered with a slight patina. The jacquard weave made of a nylon warp and linen weft is dyed after weaving. The exciting two-tone effect is created by using two materials that absorb the colour differently.

## GENIUS 10801

This floor-to-ceiling burnout fabric has an impressive modern interpretation of a classical motif. The large elements boast a colour gradient created by different dyed yarns. The jacquard lends an additional stripe effect. The colour palette is made up of light and natural colours, as well as the on-trend colours of terracotta and bright green.

## LEORA 14634

Traditional Persian textile art was the original inspiration for the design LEORA. The pattern was given a modern interpretation by reducing everything to a simple monochrome line drawings which were then meticulously embroidered onto the cotton-silk base. The blend of precious materials produces the subtle lustre of this timeless fabric.

## ANAHI 10804

ANAHI is a floor-to-ceiling Trevira CS organza with a graphical, two-tone clip cord pattern. Its colour palette includes vibrant tones such as yellow and terracotta, as well as pure white.

## LABYRINTH 2837

A soft wool blend was used to weave the floor-to-ceiling LABYRINTH jacquard. The small graphical pattern is reminiscent of a mysterious labyrinth. The colour palette ranges from soft natural tones to contemporary blue and saffron yellow.

## SELVA 14635

SELVA brings the tropical rainforest to your windows. The shiny velvet leaf pattern is carefully appliquéd by hand on the soft, flowing polyester taffeta base cloth. The natural shimmer of the velvet and the deliberate two-tone embroidery give SELVA a gorgeous lively look and, depending on the colourway, an elegantly opulent or intensely tropical feel.

## CONTOUR 14629

A linear graphic pattern decorates the floor-to-ceiling polyester CONTOUR fabric. The jacquard boasts a soft drape and subtle sheen.

## PARADISO 14639

Oversized flowers and leaves come together to form an imaginative thicket in the PARADISO design. Using the entire width of the jacquard loom, the skillful combination of colours and weaving techniques creates a vivid image. You can feel the fluffy matte chenille yarn in the leaves. Another fancy effect yarn gives the flowers its metallic sheen. PARADISO can be used both as a heavy decoration and as an upholstery fabric.



## Bildnachweis | Picture Credits

DE | Der Inhalt des Dokumentes ist ausschliesslich für Präsentationen und als Arbeitshilfe konzipiert. Einzelne Bilder sind in Eigentum Dritter und dürfen in keiner Art und Weise reproduziert werden. Alle anderen Bilder und geistiges Eigentum sind urheberrechtlich geschützt von Christian Fischbacher Co. AG.

EN | Contents of this document are exclusively for demonstration and guidance. Individual images may belong to third parties and will be clearly stated so and may not be reproduced in any way. All other imagery and intellectual property are copyright of Christian Fischbacher Co. AG.

Dioxin / photocase\_99175  
Daniel.Schoenen / photocase\_145739  
Thomasfuer / photocase\_2309366  
Addictive / photocase\_2828751  
iStock\_00000072345Small  
iStock\_00004556208Large  
iStock\_000016270054  
iStock\_000041582724  
iStock\_000045920678  
Caesar Boëtius van Everdingen / Rijksmuseum  
Ohara Koson / Rijksmuseum  
Camilla Fischbacher





## Adressen Europa | addresses: Europe

---

### Headquarter Switzerland

Christian Fischbacher Co. AG  
Mövenstrasse 18  
9015 St. Gallen, Switzerland  
T +41 71 314 66 66  
F +41 71 314 66 67  
info@fischbacher.ch

### Germany & Austria

Christian Fischbacher GMBH  
Simonshöfchen 27  
42327 Wuppertal, Germany  
T +49 202 739090  
E-Mail De: Verkauf.de@Fischbacher.com  
E-Mail Au: Verkauf.at@Fischbacher.com

### Italy

Christian Fischbacher SPA  
Via Roggia Lubiana, 141  
22040 Alzate Brianza Co, Italy  
T +39 031 55 78 01  
F +39 031 55 78 50  
info@fischbacher.it

### France

Christian Fischbacher S.A.R.L  
20 Rue Du Mail  
75002 Paris, France  
T +33 1 42 36 97 00  
F +33 1 42 36 98 00  
info@fischbacher.fr

### Benelux

Christian Fischbacher B.V.  
Pedro De Medinalaan 11  
1086 Xk Amsterdam, Nederland  
T +31 20 647 22 66  
F +31 20 643 18 87  
info@fischbacher.nl

### United Kingdom

Christian Fischbacher Ltd.  
Design Centre Chelsea Harbour  
Unit 105 First Floor Centre Dome  
London SW10 OXE, Great Britain  
T +44 20 7351 9332  
london@fischbacher.com

## Rest der Welt | rest of the world

---

### Japan

Nihon Fisba K.K.  
CH Building 2F  
2-7-28 Minami Aoyama  
Minato-Ku, Tokyo, 107-0062, Japan  
T +81 3 5775 0605  
F +81 3 5775 5480  
info@fisba.co.jp